

The Amusement Ride Safety Bulletin below is for use by State Amusement Ride Officials. We have in the past shared information with state and local authorities regarding amusement ride safety pursuant to Section 29(e) of the Consumer Product Safety Act, 15 U.S.C. 2078(e), and have asked that the information not be released to the public, as required by that statute. However, in this instance, Wisdom Industries, Ltd. has agreed to the public release of this information, and therefore the usual restriction does not apply.

AMUSEMENT RIDE SAFETY BULLETIN
Sizzler and Deluxe Sizzler Amusement Rides
October 18, 2004

The U.S. Consumer Product Safety Commission (CPSC) staff is notifying state and local authorities having jurisdiction over amusement rides that we are investigating the Sizzler and Deluxe Sizzler Amusement Rides. CPSC staff are working with Wisdom Industries, Ltd to inspect and correct as necessary existing Sizzler and Deluxe Sizzler Amusement Rides.

On September 19, 2004, an incident occurred on a Sizzler ride operating in Massachusetts resulting in the death of one passenger and the injury of two other people when the end of the seat structure gave way allowing the two occupants to be thrown out of the ride. As a result of the incident, Wisdom Industries, Ltd. is requesting that all owner/operators of the Sizzler and Deluxe Sizzler rides immediately perform the critical safety inspections detailed in the attached bulletin. In addition, the U. S. Consumer Product Safety Commission (CPSC) is requesting State and Local officials to locate these rides and require owners to cease operation of the Sizzlers until they complete a thorough inspection of the internal frame bolts, the foottub hinge bolts and internal frame welds.

The key Inspection Points of Wisdom's Bulletin:

Before a Sizzler ride is allowed to operate, owner/operators must:

- 1. Inspect, grade and torque the four (4) internal frame bolts.**
- 2. Inspect foottub hinge bolts for proper grade and all metal locknuts installed.**
- 3. Inspect internal frame welds.**
- 4. Return attached verification of inspection form to Wisdom Industries, Ltd.**

NOTE: CPSC staff has worked with Wisdom to update the inspection and maintenance bulletins previously distributed by Wisdom that applied to these bolted and welded joints. These updated bulletins are attached to this notice and should be used to perform the required inspection and repairs.

CPSC staff continues to work with Wisdom Industries Ltd. to resolve any safety issues related to this ride and the September 19th incident. Based upon what we now know, CPSC recommends that you not allow Sizzlers and Deluxe Sizzlers to operate, unless they meet the requirements of the

Wisdom program. Please contact me if you have any questions or comments on this matter.

**Roy W. Deppa
Associate Director
Office of Compliance
301-504-7514**



**WISDOM
INDUSTRIES, Ltd.**

SAFETY BULLETIN

DATE: OCTOBER 18, 2004
RIDE: SIZZLER AND DELUXE SIZZLER ONLY
SUBJECT: SIZZLER SEAT FRAME AND FOOT TUB
ATTACHMENT INSPECTION
TIME: IMMEDIATE
FREQUENCY: ANNUAL

❖ **WARNING: FAILURE TO PERFORM THIS INSPECTION CAN RESULT IN SERIOUS INJURY TO YOUR PASSENGERS.**

▪ **KEY INSPECTION POINTS OF THIS BULLETIN**

1. Inspect, grade & torque of the 4 internal frame bolts.
2. Inspect foottub hinge bolts for proper grade and all metal locknut installed.
3. Inspect internal frame welds.

❖ **INSPECTION PROCEDURE TO BE FOLLOWED IS ON ATTACHED PAGES AND DRAWING.**

❖ **NOTE: If replacement bolts are needed contact Wisdom Industries for replacement. If the bolts are purchased locally verify grade 5 bolts by the head marking (See drawing). Many hardware stores only sell grade 2 or 3 bolts. These bolts are unacceptable and dangerous.**

THE INSPECTION OF THE SIZZLER RIGHT SIDE (SEAT LOCK SIDE) SEAT INTERNAL FRAME MOUNTING BOLTS.

1. Remove the two ¼ inch bolts holding the seat lock brass to the side of the car.
2. Slide out the side quarter panel.
3. Inspect the two internal frame mounting bolts for proper Grade 5.

4. Replace if they are loose or broken and use Red Loctite.
5. Inspect bolts for proper 7/16 inch diameter. Check proper head size using a 5/8 inch socket.
6. Check that torque of 7/16 inch bolt is 60 foot pounds .

➤ **NOTE: IF BOLT IS LOOSE REMOVE THE BOLT CLEAN THREADS WITH WIRE BRUSH AND APPLY RED LOCKTITE. TORQUE BOLT TO 60 FOOT POUNDS.**

7. Verify that the foottub hinge nut is a 5/8 inch all metal lock nut.
 - **Warning NEVER reuse locknuts**
 - **Only use all metal locknuts on the hinge bolts.**
 - **Inspect hinge pipe welds for cracks.**

FOR INSPECTION OF THE LEFT SIDE (SPINDLE SIDE) SEAT IRON BOLTS.

○ IF THE INSPECTION HOLE IS NOT INSTALLED

1. Remove seat liner to perform annual inspection.
2. Cut a hole in the left side of the car body using a hole saw. Review the enclosed drawing for the location of the hole. Use a 5 inch diameter hole saw.
3. Inspect the two internal frame mounting bolts for proper Grade 5.
4. Replace if they are loose or broken and use Red Loctite.
5. Inspect bolts for proper 7/16 inch diameter. Proper head size of a 7/16 inch bolt uses a 5/8 inch socket.
6. Check that torque of 7/16 inch bolt is 60 foot pounds.

➤ **NOTE: IF BOLT IS LOOSE REMOVE THE BOLT CLEAN THREADS WITH WIRE BRUSH AND APPLY RED LOCKTITE. TORQUE TO 60 FOOT POUNDS.**

6. Verify that the foottub hinge nut is a 5/8 inch all metal lock nut.
 - **Warning NEVER reuse locknuts**
 - **Only use all metal locknuts on the hinge bolts.**
 - **Inspect hinge pipe welds for cracks.**

REASSEMBLY

**Reassemble fiberglass quarter panel and seat lock brass
Perform lapbar inspection procedure on following page.**

SIZZLER

LAP BAR & SEAT LOCK INSPECTION PROCEDURE

1. Raise lap bar and latch.
2. Check lap bar hinge bolts and pipe for wear or looseness.
3. Check lap bar arm for cracks.
4. Check that seat lock brass is tight.
5. Open lap bar.
6. Push seat lock pin. It must snap back out and not drag or catch.
7. Close lap bar. Seat lock pin must snap into the notch in the brass.
3/8 inch minimum engagement of pin in brass.

➤ **NOTE: ELECTRIC SEAT UNLOCKING IS NOT MANDATORY.**

8. Activate electric unlocking system.
NOTE: All seat locks should release.
9. Turn off electric unlocking system.
NOTE: The timer will shut off the solenoids after about 15 seconds.
10. Go around seat to inside (spindle side) and pull on the lap bar sideways and out to try to pop seat lock pin out of the brass.
11. If bar comes open, tie off that car until repairs are made. Replace any components needed if the bar will come open.
12. Repeat for each seat.

****WARNING****

Never install a bolt or knob to manually unlock the lapbar. Passengers have been known to open the bar while the ride is running and come out of the seat.

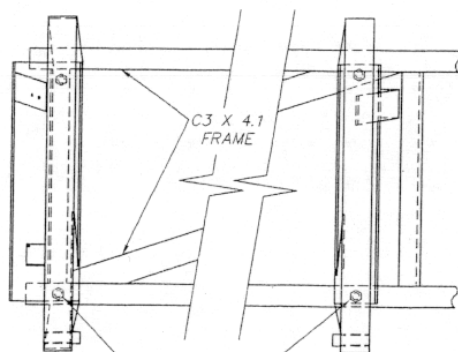
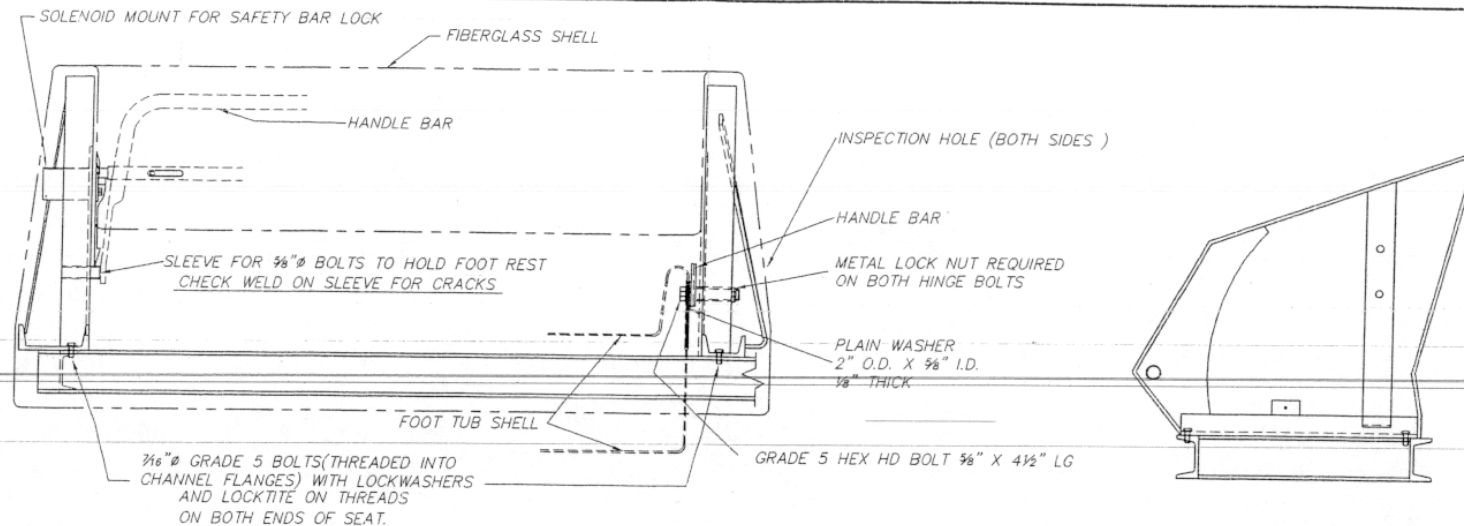
****NOTE****

Each seat lock pin is custom drilled for each car and lap bar. Make sure the same pin goes back to the same bar on the same car.

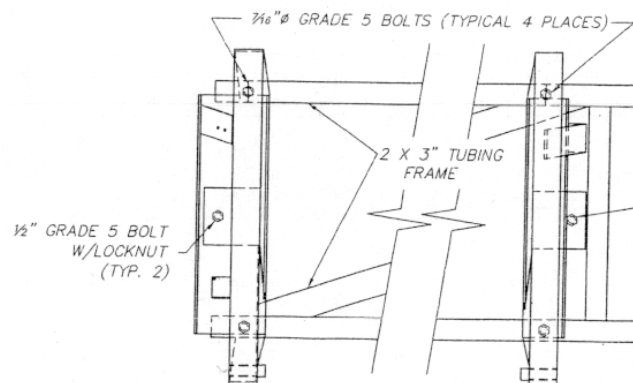
INSPECT CLEARANCE OF FOOTTUB TO SWEEP AND TRAILER GOOSENECK.

SEE ATTACHED BULLETIN.

Please notify Wisdom Industries following this inspection and notify us to the status of the bolts on your ride. If you have any questions, please contact Wisdom Industries at 800-634-6097.



**VIEW OF SIZZLER
BOLT PATTERN**



**VIEW OF DELUXE SIZZLER
BOLT PATTERN**

1/2" Ø GRADE 5 BOLTS
HEAD SIZE IS 3/4"
TORQUE TO 75 FOOT POUNDS
LOCKNUT MUST BE USED.

5/8" Ø GRADE 5 BOLTS
HEAD SIZE IS 5/8"
TORQUE TO 60 FOOT POUNDS
CHECK HEAD FOR GRADE 5 MARKINGS



WISDOM INDUSTRIES Merino, CO 80741	
SCALE: 1 1/2" = 1'-0"	APPROVED BY: <i>[Signature]</i>
DATE: 06/01/98	DRAWN BY: SFH
DESCRIPTION: INSIDE CONSTRUCTION OF SEAT	
EQUIPMENT: SIZZLER	DRAWING NUMBER: 01 519



WISDOM
INDUSTRIES

Merino, CO 80741

APPROVED BY:

DESCRIPTION

SEAT INSPECTION GUIDE

EQUIPMENT:

SIZZLER

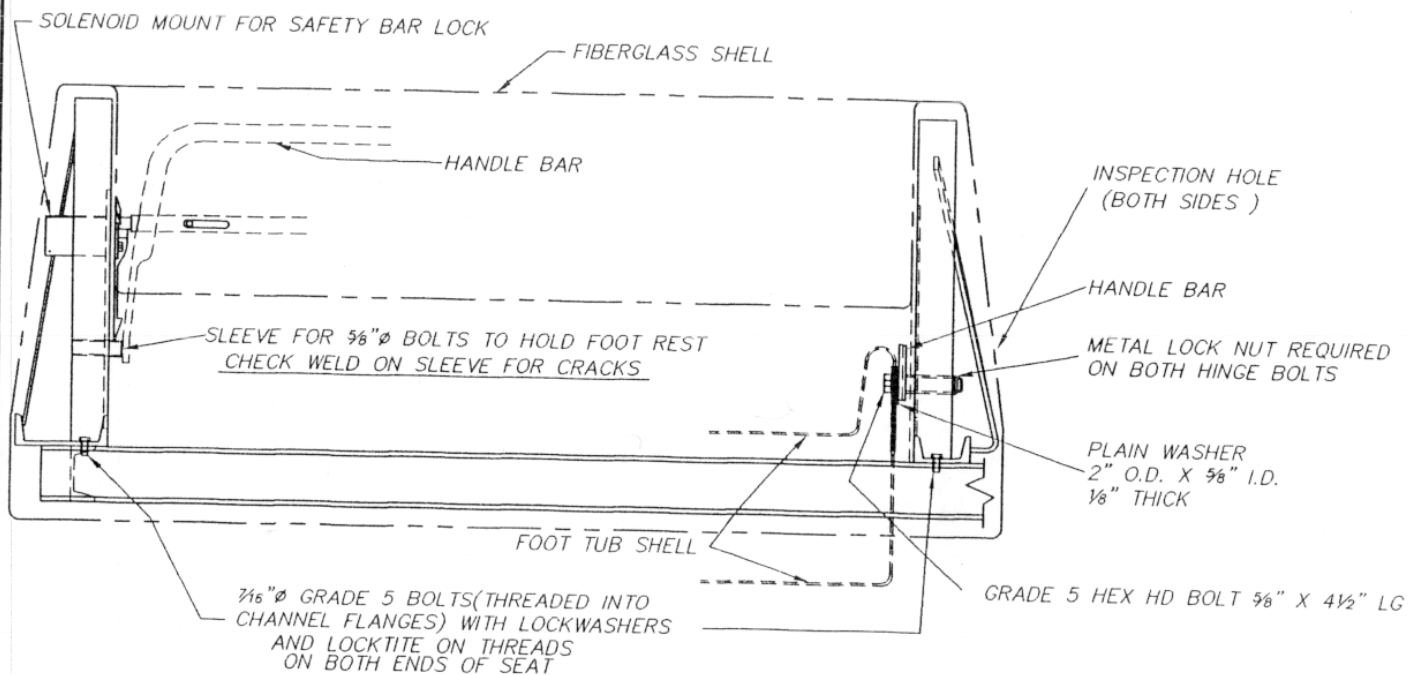
SCALE: NTS

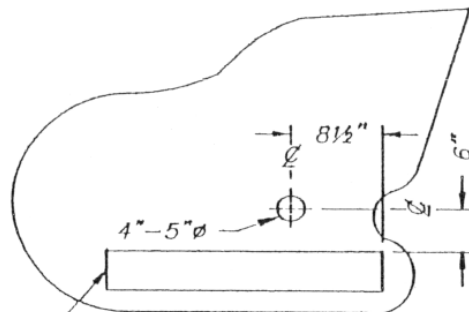
DRAWN BY:

M. HICKAM

DRAWING NUMBER:

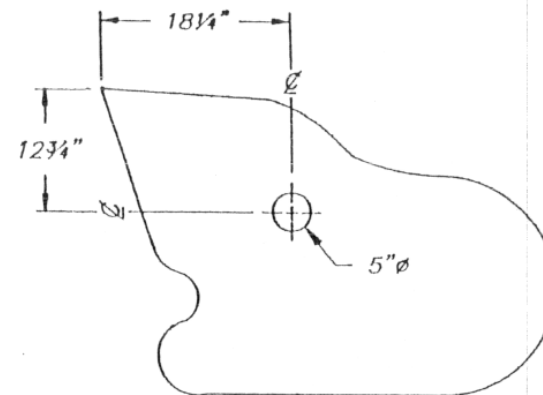
01519SB





SWEEP CUT OUT

LEFT SIDE OF SEAT



RIGHT SIDE OF SEAT

IF RIGHT SIDE INSPECTION HOLE IS DESIRED.

NOTE: 1 LEVEL TRAILER.

2 USE LEVEL FROM BACK CORNER OF SEAT
TO MARK CENTER LOCATION.



**WISDOM
INDUSTRIES**

Merino, CO 80741

SCALE: N.T.S

APPROVED BY:

DRAWN BY: MFK

DATE: 08-25-94

REMOVED

DESCRIPTION

SEAT INSPECTION HOLE LOCATIONS

EQUIPMENT:

SIZZLER

DRAWING NUMBER

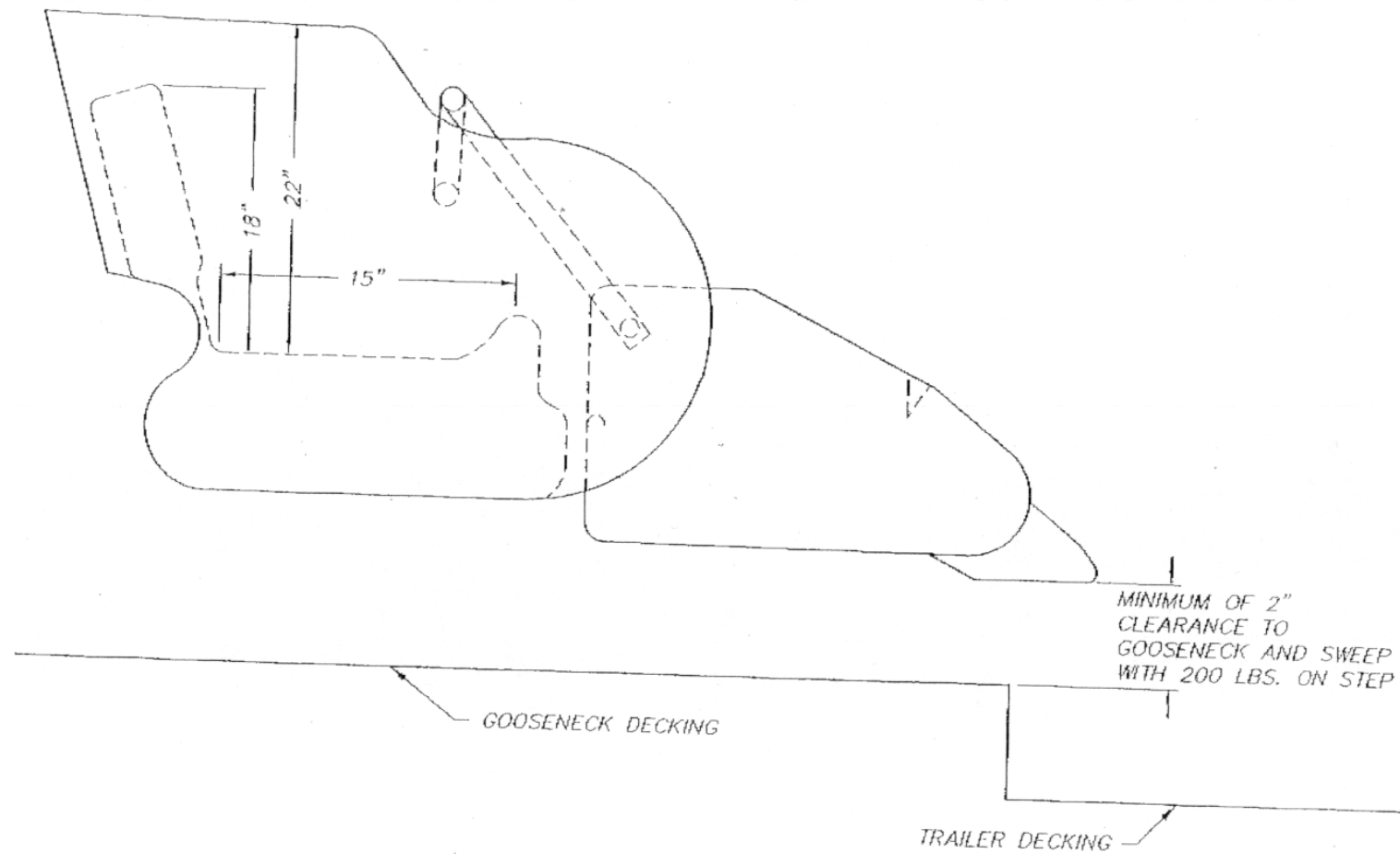
SEAT

AUG 25, 1994 - 16:00:18 < F: \SIZZ-DWG\SEAT >

WISDOM IND

10/12/2004

MAY 28, 1997 -- 14:07:05 <F:\SIZZ-DWG\SEAT >





WISDOM INDUSTRIES, Ltd.

SIZZLER BULLETIN

DATE: MAY 1997
RIDE: SIZZLER/DELUXE SIZZLER FOOT TUB
SUBJECT: Inspect the pivot hole on each side of each foot tub on the SIZZLER/DELUXE SIZZLER for corrosion and excessive wear
COMPLIANCE: Inspection Daily before operating ride.
FREQUENCY: DAILY

INSPECTION

1. Inspect the pivot hole on the foot tub for excessive wear. Approximately 1/8th inch maximum play on foot tub next to hinge.
2. Inspect the fiberglass in the hinge area for cracks or fracturing which would indicate the internal steel is broken or worn to the point of relying on the fiberglass for strength. (Hole should be centered on boss on side of fiberglass foot tub).
3. Check clearance of the foot tub to the gooseneck, Minimum 2 inch clearance with a person standing on the step of the foot tub. Measure to the corner of the gooseneck.
4. If foot tub noticeably slopes down, perform inspection before allowing passengers in the seat. Close any seat that does not meet this inspection criteria.

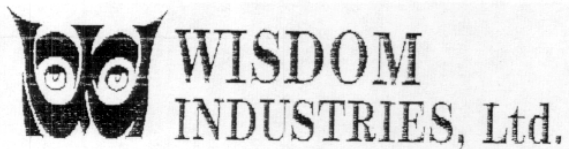
Replacement of the foot tub or foot tub internal steel is required for repair.

****WARNING****

Failure of the foot tub hinge point will result in injury to your passengers.

Contact Wisdom Industries with any discrepancies on the foot tubs that you find which will require replacement or reinforcement of the foot tub hinge.

If you no longer own this ride, please contact us so we can update our records. Thank you for your cooperation in this matter. If you have any questions about this bulletin, please feel free to contact us at 1-800-634-6097 or 1-970-522-7515.



SIZZLER SEAT INSPECTION COMPLIANCE NOTICE

SIZZLER SERIAL NUMBER _____

DATE INSPECTED _____

OWNER COMPANY NAME _____

OWNER ADDRESS _____

NUMBER OF SEAT FRAME BOLTS LOOSE _____

NUMBER OF SEAT FRAME BOLTS BROKEN _____

NUMBER OF SEAT FRAME BOLTS MISSING _____

We no longer own this ride

The Sizzler was sold to _____
Address _____

INSPECTED BY (Print name) _____

SIGNATURE _____

Return to: Wisdom Industries
Box 5000
Sterling, CO. 80751